

JTAG Download Cable User Guide Rena Electronics Inc.

Product Description

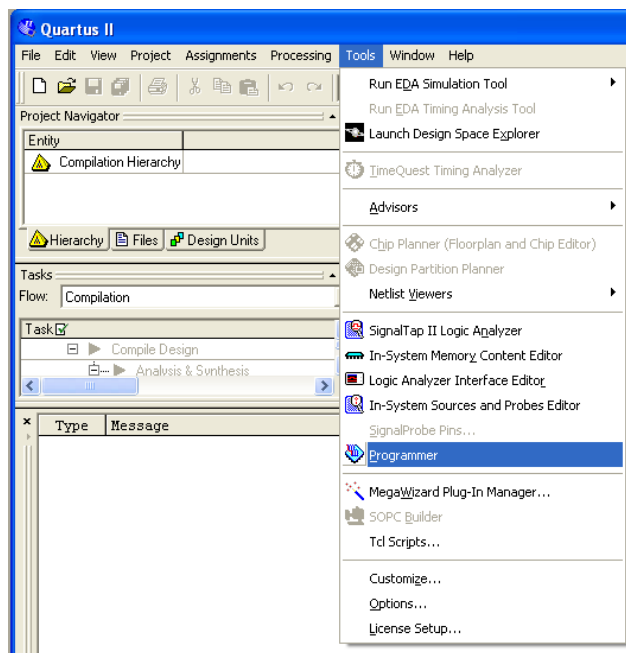
This JTAG download cable is functionally compatible with Altera's ByteBlaster MV Parallel download cable. The schematic is based on ByteBlaster MV Cable reference design with the addition of a power LED. You can use this cable together with Altera's Quartus Design Software available at their website.

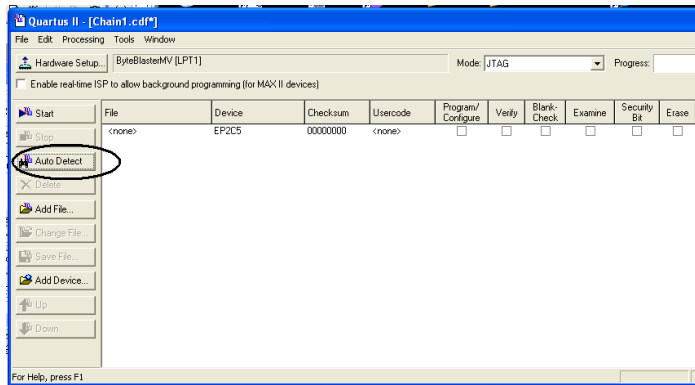
Program Your Device

- Download and install Quartus Design Software
- Plug the DB25 head shell to the parallel port of your computer.
- Plug the 10 pins female plug into your target's JTAG header. You may reference to page 5 of "Reference Document" for details.
- Power on your target device
- Make sure the cable power LED is on.

Auto Detect Your Device

Run Quartus Design Software, click **Tools** → **Programmer** then click **Auto Detect**. You should see your detect show up on the table.





If you want to test the JTAG chain, click **Processing** → **JTAG Chain Debugger** and run IDCODE iterations test.

